

MOUNTAIN TERRACE SUBDIVISION NO. 2

TAXING UNIT: 25

IN OGDEN CITY

PREFIX: 13-157

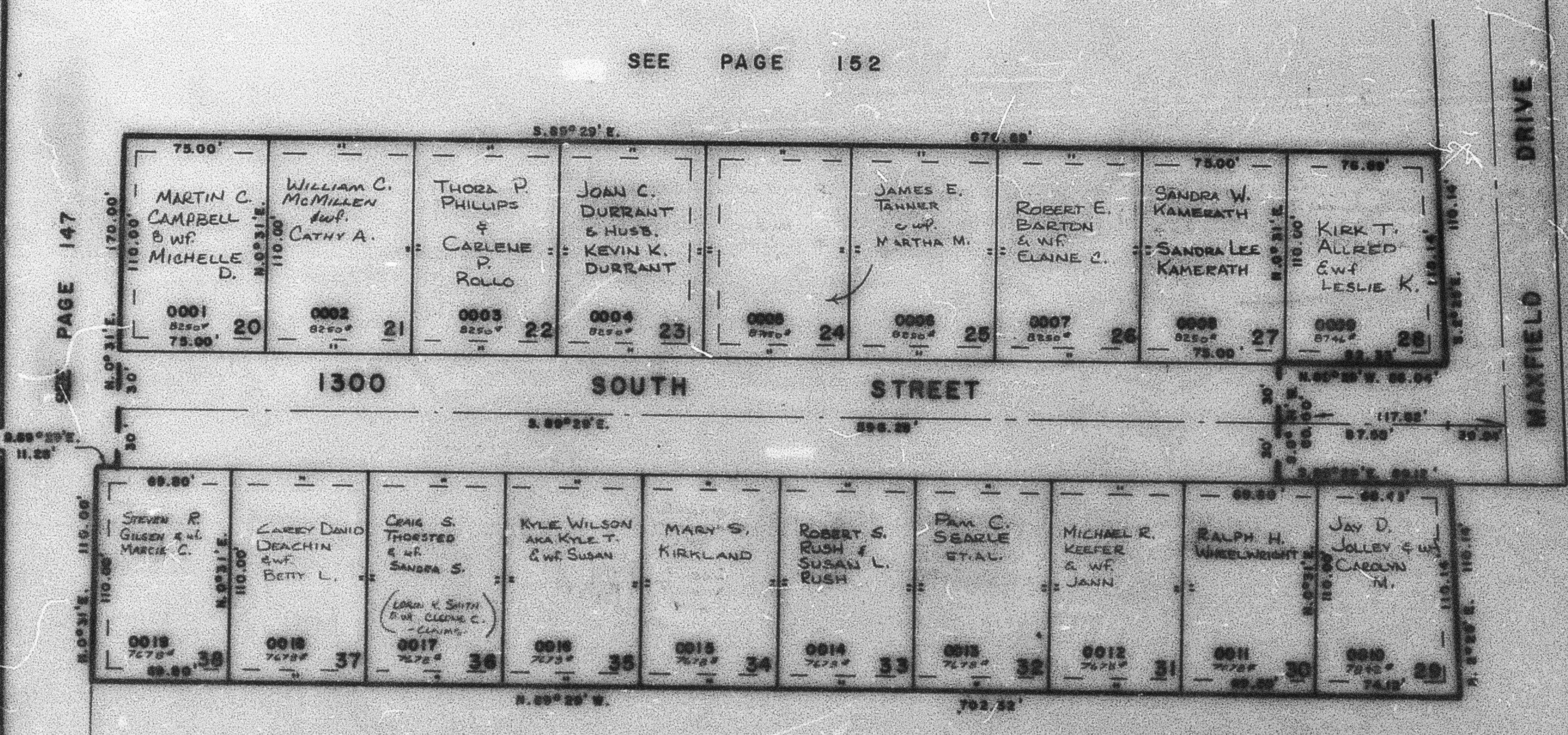
SCALE 1" = 50'

SEE PAGE 152

SEE PAGE 147

DRIVE
MAXFIELD

SEE PAGE 46



SEE PAGE 160

SEE PAGE 161

PUBLIC UTILITY & DRAINAGE EASEMENT
ONE TO FEET WIDE EACH SIDE OF LOT LINE

FOR COMPLETE EASE. DATA SEE OGDEN
CITY PLAT IN BOOK 21, PAGE 67

SE COR. OF S.E. 1/4
OF N.W. 1/4 SEC. 22